

Multimedia Projector EB-1925W / EB-1915 / EB-1900

SPECIFICATIONS			EB-1925W	EB-1915	EB-1900
Main Parts	LCD	Size	0.74-inch x 3	0.7-inch x 3	0.7-inch x 3
	Pixel Number	Native Resolution	1,024,000 dots (1280 x 800) x 3	786,432 dots (1024 x 768) x 3	786,432 dots (1024 x 768) x 3
		Projection Lens	Powerd Focus & 1.6 x Optical zoom F-number=1.75 - 2.42 / Focal Length=24.0 - 38.2mm		
	Lamp	Type	230 W UHE		
Screen Size	Life		2500 hours (Power Consumption: Normal) / 3500 hours (Power Consumption: ECO)		
	Offset		30" to 300" (0.91 to 15.42 m)		
Light Output*	Brightness Control Normal / Eco	4000 lm / 2700 lm		4000 lm / 2700 lm	
		4000 lm		4000 lm	
Contrast		2000:1			
Sound Output		10 W Monaural			
Keystone Correction	Vertical	Yes (Auto / Manual)			N/A
	Horizontal	Yes (Auto / Manual)			N/A
Screen Fit		Yes			
Analog RGB	Input Terminal	Video	D-sub 15pinx2		
		Audio	Stereo Mini x 2		
	Output Terminal	Video	D-sub 15pinx1		
		Audio	Stereo Mini x 1		
Video	Input Terminal	Video	Composite Video: RCA x 1 (Yellow) S-Video: Mini DIN x 1		
		Component Video: D-sub 15pin x 2 (corresponds with Analog RGB connector)	Component Video: D-sub 15pin x 1 (corresponds with Analog RGB connector)		
	Audio	RGB Video: D-sub 15pin x 2 (corresponds with Analog RGB connector)	RGB Video: D-sub 15pin x 1 (corresponds with Analog RGB connector)		
		RCA x 1 (White / Red)	N/A		
Digital Input Terminal		HDMI x 1			
Control	USB I/O	Terminal	USB Type B x1		
		Speed	USB Type B Ver. 2.0		
	Serial	Terminal	D-sub 9 pin x 1		
		Signal	RS232C		
Memory	Terminal	Speed	USB Type A x 2 (for USB Memory / for Document Camera)		
		Speed	USB Type A Ver.2.0		
Network for Projection	Wired LAN	Terminal	RJ45 x1 100Mbps		
		Terminal	USB Type A x 1		
	Wireless	Terminal	IEEE 802.11b: 11Mbps** IEEE 802.11g: 54Mbps** IEEE 802.11a: 54Mbps**		
		Support Speeds for each mode	N/A		
PC Applications		EasyMP Monitor (for Windows)*** EasyMP Network Projection (for Windows and Mac) with audio*** USB Display (for Windows) with audio Quick Wireless Connection (for Windows) with audio**** EasyMP Slide Converter (for Windows)***			
Operating Temperature		5 °C to 35 °C <41 °F to 95 °F>			
Operating Altitude		Up to 7,500 feet <2286 m> (over 4,921 feet <1,500m> area: use with High Altitude mode)			
Start-Up period		About 10sec.			
Direct Power On		Yes			
Direct Power Off		Yes			
Cool-Down Period		Instant off			
Power Supply Voltage		100 - 240 V AC +/- 10%, 50/60 Hz			
Power Consumption	100-120V	Lamp on	341W		
		Stand by	0.2W (Network Off)		
	220-240V	Lamp on	319W		
		Stand by	0.3W (Network Off)		
Dimensions Exclude Feet (D x W x H)		257 x 357 x 86 mm			
Weight		Approx. 7.82 lbs. / 3.5kg			Approx. 7.25lbs. / 3.2kg
Fan Noise		Brightness Control : Normal / Eco 37dB / 29dB			

*Light Output / Color Light Output / Contrast --- Color mode: Dynamic, Zoom: Wide
Maximum speed and range is achievable when used with same enhanced mode technology. Actual data rates, features and performance may vary depending on your computer system, and environment. *Supplied on included CD-ROM ****Supplied as an option

SUPPLIED ACCESSORIES

Power Cable	3.0m
Remote Control	With AA type alkaline batteries x2pcs
Computer Cable	1.8m <6 ft>, AHD-15 pin type slim-cable
USB Cable	3.0m
Soft Carrying Case	Except EB-1900
Password Protect Sticker	
User's Manual	
EPSON Projector Software for Meeting & Presentation (1925W/1915)	
EPSON Projector Software for Meeting & Monitoring (1920W/1910/1830)	
Wireless LAN Unit	ELPAP03 (1925W/1915)

OPTIONAL ACCESSORIES

ELPLP53	Spare Lamp
ELPAF24	Air Filter Set
ELPAP06	Quick Wireless Connection USB Key
ELPDC06	USB Document Camera

Bold, Bright, Beautiful...3LCD Technology

3LCD technology achieves bright, natural images and smooth, sharp video playback. No color break-up makes images gentle on the eyes.



PROJECTION DISTANCE / EB-1915/1900

4:3 Screen Size	Shortest (Wide)	Longest (Tele)	Offset
X (screen size / dimension)	Y (cm / inch)		
Z (cm / inch)			
60" / 150 cm x 91 cm 47.2" x 35.4"	197 / 78	321 / 126	8 / 3.3
80" / 160 cm x 120 cm 63.0" x 47.2"	265 / 104	430 / 169	11 / 4.4
100" / 200 cm x 150 cm 78.7" x 59.1"	332 / 131	538 / 212	14 / 5.5
200" / 410 cm x 300 cm 161.4" x 118.1"	670 / 264	1081 / 426	28 / 10.9
300" / 610 cm x 460 cm " x "	1007 / 397	1624 / 640	42 / 16.4

PROJECTION DISTANCE / EB-1925W

16:10 Screen Size	Shortest (Wide)	Longest (Tele)	Offset
X (screen size / dimension)	Y (cm / inch)		
Z (cm / inch)			
60" / 150 cm x 81 cm 61.0" x 32.0"	187 / 74	305 / 120	5 / 1.9
80" / 170 cm x 110 cm 67.0" x 43.0"	251 / 99	408 / 161	6 / 2.5
100" / 220 cm x 130 cm 87.7" x 51.0"	315 / 124	511 / 201	8 / 3.2
200" / 430 cm x 270 cm 169.3" x 106.0"	636 / 250	1027 / 404	16 / 6.4
300" / 640 cm x 400 cm " x "	956 / 376	1542 / 607	24 / 9.6

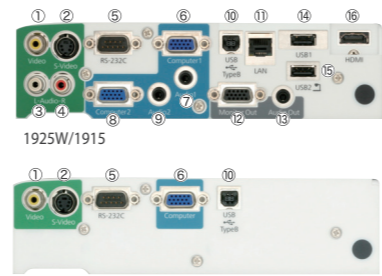
WARRANTY SERVICE

2 Years Onsite Warranty Service to be provided for local purchase only.



The warranty service can be extended by purchasing Epson Coverplus Extended Warranty. For more information, please contact Epson customer support.

CONNECTOR PANEL



- | | |
|--------------------|------------------|
| ① Video Input | ⑨ Audio Input 2 |
| ② S-Video | ⑩ USB (Type B) |
| ③ Video-L Input | ⑪ LAN |
| ④ Video-R Input | ⑫ Monitor Out |
| ⑤ RS-232C | ⑬ Audio Out |
| ⑥ Computer Input 1 | ⑭ USB (Type A) 1 |
| ⑦ Audio Input 1 | ⑮ USB (Type A) 2 |
| ⑧ Computer Input 2 | ⑯ HDMI |

Multimedia Projector

WXGA XGA
EB-1925W EB-1915 EB-1900



Effective support for successful meetings and classes.



R & B COMPUTER SYSTEMS LTD.

力衡電腦系統有限公司

2749 3325

www.rnb.com.hk
rnb@rnb.com.hk

14/F., Vogue Centre, 696 Castle Peak Road, Lai Chi Kok, Kln., H.K.
香港九龍荔枝角青山道 696 號時采中心 14 樓 Fax: 23973768



Effective support for successful meetings and classes.

Are you having some concerns with regard to projectors?
Issues like size, weight, ease of use, etc...

The Epson EB-1900 series aims to resolve these issues with its rich and useful functions that are easy to use and a clean yet simple look to suit any environment. This compilation of features allows the audience to concentrate on the class or presentation materials.



Multimedia Projector
WXGA XGA
EB-1925W EB-1915 EB-1900

Are you having some concerns with regard to projectors?
The Epson EB-1900 series aims to resolve these issues.



Set-up

Concern during set-up: Difficult projector set-up and adjustment

Easy to adjust projected images

Auto H/V Keystone Correction

Simply turn on the power and direct the projector toward the screen or wall and the image will be automatically corrected in just a couple seconds. The focus is also automatically adjusted at the same time for a prompt completion of set-up.

(Horizontal auto keystone correction: only for EB-1925W/1915, Excluding EB-1900)



Screen Fit

In cases where the image extends beyond the frame of the screen or whiteboard you just have to push the Screen Fit button and the image frame will automatically match up with the edges of the screen. Focus is, of course, adjusted automatically as well.

(For EB-1925W/1915)



Clearly visible images even under fluorescent lights

4000 lm High Brightness

With a high 4000 lm brightness setting you don't have to draw the curtains for rooms of up to 50-60 people. It's possible to use it in an office or classroom without dimming the lights. Its 3.5kg weight makes it easy to take it with you.

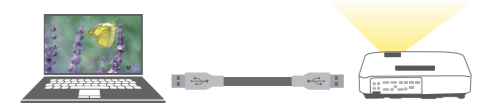


No special settings required for projection with a PC

USB Display

A troublesome set-up is no longer necessary for image projection. Images can be projected by simply connecting the PC and projector via the included USB cable. Sound data can also be sent*. A built-in 10W speaker allows you to enjoy powerful sound without having to prepare a separate speaker.

*For EB-1925W/1915



Operation

Concern during operation: Complicated projector operation makes it hard to concentrate on the presentation / lesson

Safety with wireless

Wireless Connection

Free from complicated and dangerous cables! A wireless LAN connection is possible via an access point*. You can make a direct connection between 1925W/1915 and a PC. Sound can also be transmitted wirelessly with 1925W/1915, so that it isn't necessary to connect an audio cable.

(For EB-1925W/1915)



Farewell to heavy PCs

PC Free

Using the included "Slide Converter" software, presentations are possible without a PC using a USB memory device. You can just bring the data along without any distractions.

(For EB-1925W/1915)

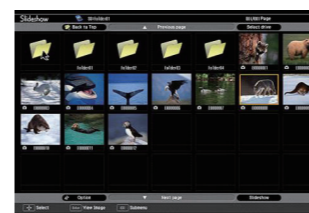


Easy to share pictures

Slide Show

Simply save pictures as JPEG data on a USB memory device, insert into the projector and your pictures are projected automatically. The viewer can see beautiful pictures projected as they are for a more dramatic impression.

(For EB-1925W/1915)



Choose from a variety of sources

Wide-ranging Connectivity

Wider range of connectivity allows for more effective lessons or presentations. Depending on the situation, you can choose from a variety of connection methods including USB, HDMI*, LAN* and wireless connection*. It is also possible to connect Epson's ELPDC06 document camera with a USB cable*.

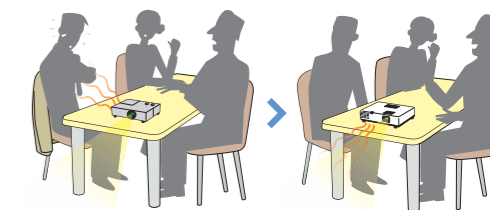
*For EB-1925W/1915



Comfortable during operation

Front Exhaust

The projector was designed to prevent anyone from being exposed to the hot exhaust even when on a narrow table.



Clean-up

Concern during clean-up: Have to wait for cool down after turning off the projector

Put away smoothly

Instant Off and Direct Power Off

With desktop use it is fine to turn off the switch immediately after use. There is no need to keep your audience waiting for cool down, allowing you to prepare for your next class or meeting for more efficient use of time. With ceiling mounted

units, Direct Power Off is a convenient feature. By linking it to the room's power source it's possible to switch off the projector along with the room light.



Additional

EuP: Directive on Eco-Design of Energy using Products

Consistent with EuP

This product was designed to meet criteria put in place to ensure environmental responsibility. EuP: Directive on Eco-Design of Energy using Products

Better Products for a Better Future

At Epson, we know that planning for the future requires a strong commitment to the environment. That is why we strive to create innovative products that are reliable, recyclable and energy efficient. Better products that use fewer resources help ensure a better future for us all.