



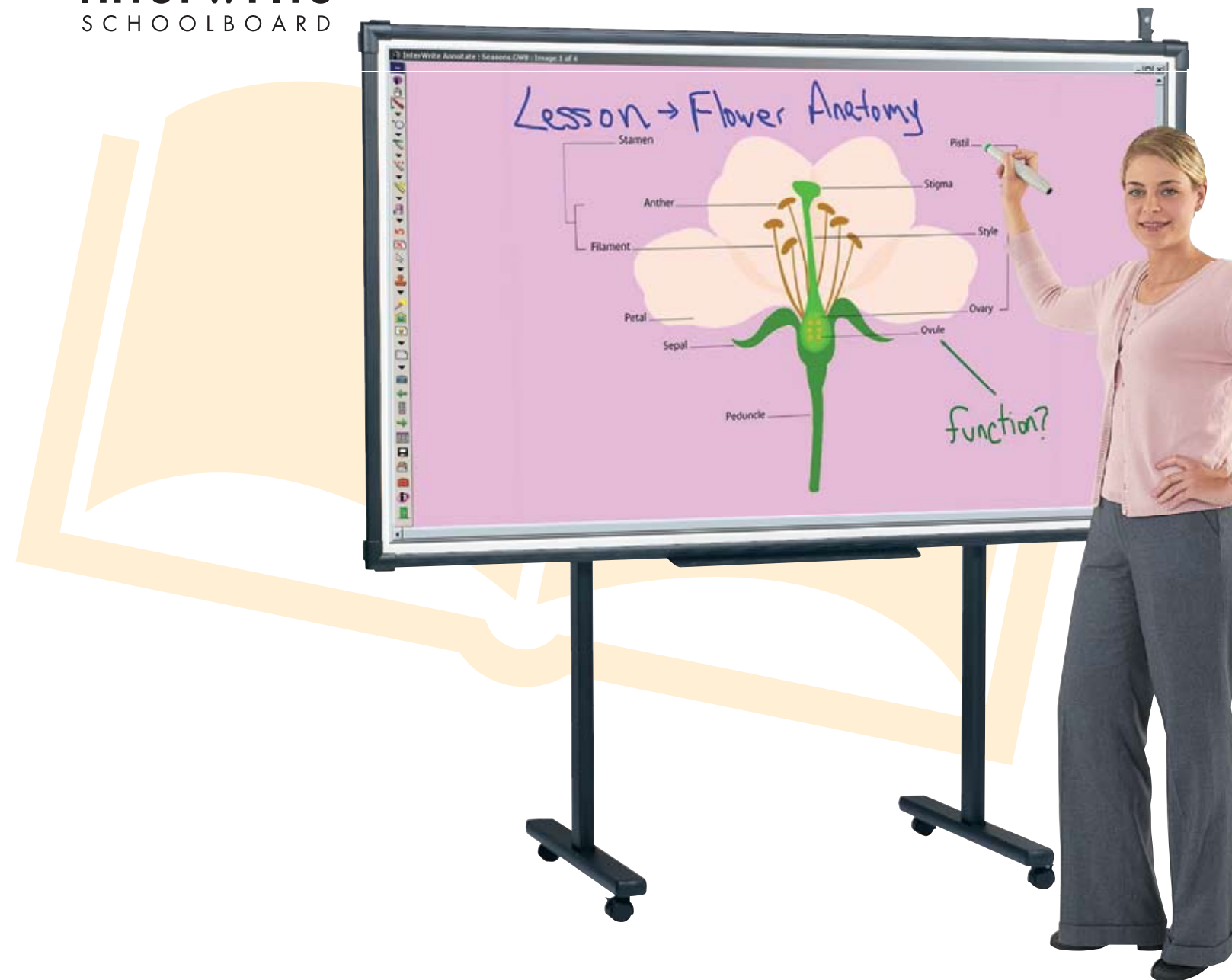
www.gtccalcomp.com

- **Corporate Headquarters**
7125 Riverwood Drive
Columbia, MD 21046
Toll Free: 800-344-4723
Phone: 410-381-6688
Fax: 410-290-9065
- **Western US Office**
8224 East Evans Road
Scottsdale, AZ 85260
Toll Free: 800-856-0732
Phone: 480-948-6540
Fax: 480-948-5508
- **European Headquarters**
GTCO CalComp, GmbH
Kreiller Strasse 24
81673, Muenchen
Germany
Phone: +49.89.370012.0
Fax: +49.89.370012.12

GTCO CalComp
PERIPHERALS



interwriteTM
SCHOOLBOARD



connect with every child



interwrite™
SCHOOLBOARD



Optional, easily adjustable floor stand provides a convenient means to move the SchoolBoard from room to room

Rigid Construction with Glare Resistant Surface

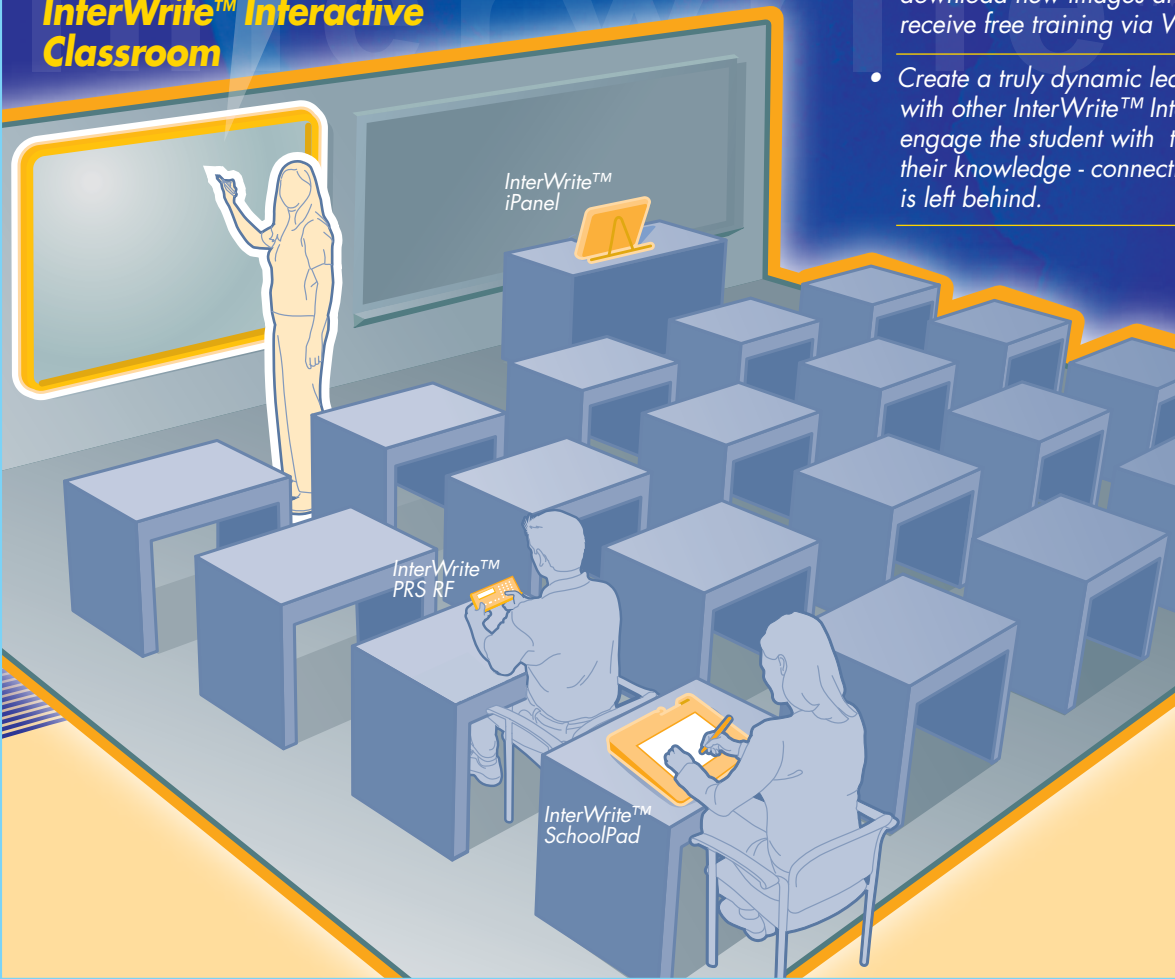
The focal point of the Interactive Classroom

InterWrite™ SchoolBoard Allows You To...

- Interact and annotate over your current lessons, PowerPoint® slides, Web pages or any other computer application.
- Create exciting and engaging lessons with the extensive InterWrite™ Image Gallery and lesson resources.
- Keep students focused on your lesson at the front of the room - even have them come up to the SchoolBoard to solve problems interactively.
- Save, Print and Email all your lesson notes and files - A great tool for lesson review, students who are absent or parents who wish to review what their children are learning.
- Participate in the InterWrite™ Educators Resource Center where you can join with fellow teachers to share lessons and activities, learn new ideas on how to use your SchoolBoard, download new images and background templates, and receive free training via WebEx or online videos.
- Create a truly dynamic learning environment. When used with other InterWrite™ Interactive Classroom products, you engage the student with the lesson and quickly assess their knowledge - connecting with every child so no one is left behind.

Programmable Softkeys to quickly launch your favorite application

InterWrite™ Interactive Classroom



KEY FEATURES

- Available in 40", 60" and 77.5" diagonal
- New! Wide-format sizes 71" and 85" diagonal for use with 16:9 aspect ratio projectors
- Electromagnetic Technology
- Durable, glare free surface
- 1,000 lines per inch resolution
- Programmable Softkeys
- Bluetooth® Wireless Technology available
- InterWrite™ Software Included
- Windows®, Mac® and Linux Compatible
- Three year warranty

The **InterWrite™ SchoolBoard** is a durable, easy-to-use interactive whiteboard designed to bring your lessons to life with its exciting and content-rich **InterWrite™ Software**. Part of the **InterWrite™ Interactive Classroom**, the **InterWrite™ SchoolBoard** keeps your students focused on the lesson at the front of the classroom and allows you to truly connect with every child. Whether you are exploring the Amazon Jungle, diagramming an animal cell, or using our interactive math tools to solve graphical equations, your students will be focused and excited to learn. Envision your classroom coming to life while using the **SchoolBoard's** fun and interactive tools - start your own **Interactive Classroom** today!

Let students solve problems interactively



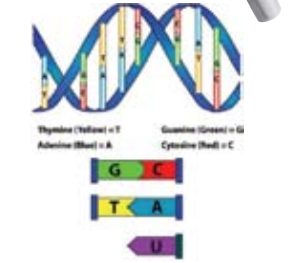
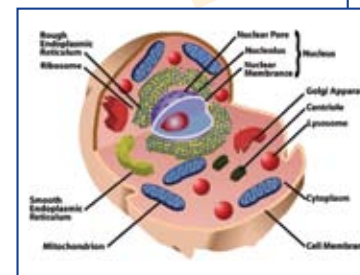
At the center of the **InterWrite™ Interactive Classroom** is the **InterWrite™ SchoolBoard** - a great focal point for students during the lesson.



Interactive pens are included with your SchoolBoard and provide full mouse capability - left and right mouse clicks, drag and drop, etc. - as well as providing an Expo® marker for dry-erase use.



Choose from thousands of images in our **InterWrite™ Software** image gallery to create powerful and engaging lessons.



InterWrite™ Software provides content for many subject areas including math, science, geography, and much more.



The **InterWrite™ SchoolBoard** is an integral part of the **Interactive Classroom** - especially when used together with **InterWrite™ PRS**, a powerful student response system.

