

Interactive Visualizer

AVerVision SPB370

Presenting Our Future's Talent





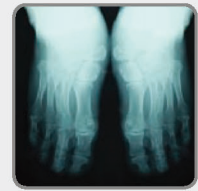
New and Enhanced

With a 10" X 8"-sized light box and an Ethernet port, the AVerVision SPB370 puts even more features at your fingertip. It is an industry-first platform visualizer equipped with an outstanding 5M pixel CMOS sensor and an unmatched zoom capability of up to 160X. Its high-speed 30fps displays any real-time motion with incredible smoothness to satisfy even your most demanding audience. An internal memory and SD card support allow you to instantaneously save your still images. The AVerVision SPB370 redefines what a visualizer can do.



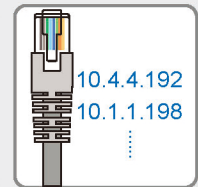
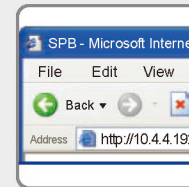
Bigger Is Better

Enjoy the freedom of a 10" x 8" light box. A larger surface area of light gives you more room to present oversized photo films and slides, A4-sized transparencies, and x-ray films without having to continuously reposition your documents during presentations.



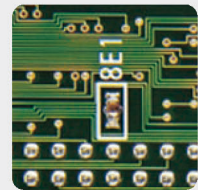
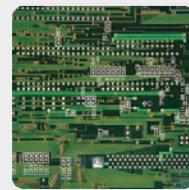
IP Addressable

Connect your AVerVision SPB370 to a network using the Ethernet port and access it via an assigned IP address. This feature allows you to control your AVerVision SPB370 using a replicated image of its remote control on an Internet browser.



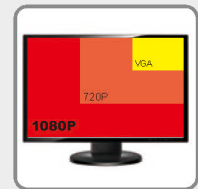
Powerful Zoom

With the combination of its 20X AVer™ Optical Zoom and 8X digital zoom, the AVerVision SPB370 offers an incredible 160X total zoom. Teachers can zoom in on the smallest details and grab the attention of people sitting in the last row.



Full HD 1080p

The AVerVision SPB370 is capable of producing Full HD 1080p output resolution. Take full advantage of today's high definition projectors and monitors by giving the most colorful and clear presentations in Full HD with the AVerVision SPB370.



Multiple Inputs and Outputs

Dual VGA inputs allow for two computers to be connected to the AVerVision SPB370, eliminating downtime between separate presentations. Display images simultaneously through the RGB and DVI-I, or S-Video and composite video outputs. A MIC input and audio output are also included, enhancing the versatility of this platform visualizer.



Versatile Software

The bundled TWAIN supported AVerVision software has been revamped for easier control when working with interactive whiteboards during presentations. The USB transmission rate has been enhanced to a maximum of 20fps, which significantly reduces the blurring and distortion of images when performing a live demo, recording video, or using the Annotation tools to add notes, overlay text, create drawings, or highlight important details. Additionally, the Networking feature provides user access to remotely control a visualizer of a local area network (LAN) to facilitate cross-room discussions. This new software combined with the Networking feature and Continuous Capture function also makes it possible for you to remotely observe lab experiments, continuously capture images through preferred time intervals, and directly save results on your PC or Mac.





AVerVision SPB370

Product Specifications

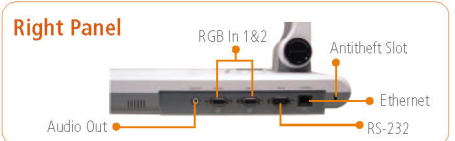
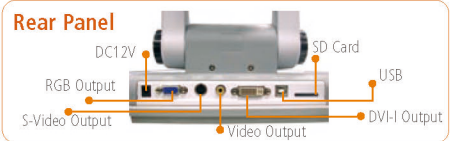
Image Sensor	1/2.5" CMOS Color Sensor Image
Total Pixels	5M Pixels
RGB Output Resolution	Full HD 1080p (1920x1080) (Max.)
Lens	f1 = 6-60mm; Auto Focus
Zoom	160X Total Zoom (20X AVer Optical Zoom + 8X Digital Zoom)
Frame Rate	30fps (Max.)
Shooting Area	310mm x 233mm
Image Rotation	Electronic Rotation 0°/90°/180°/270°/360°
Image Storage	Built-in Memory (Max: 80); SD Card Slot (Supports Cards w/ 16MB-2G Capacity)
On-Screen Display (OSD)	Provided
Image Effect	Color / B&W / Negative / Mirror / Freeze
Image Adjust.	Auto/ Manual
(White Balance & Exposure & Night View)	
AVerPresenter	Provided (AVerVisor and AVerBox)
Split Screen	Provided (Vertical & Horizontal)
Picture-in-Picture	Provided
Display Mode	Text / Graphics / High Frame / Microscope
Capture Mode	Single / Continuous
Profile	Provided
Timer	Provided
Flicker Filter Control	2 Levels
Remote Control	Provided (with Laser Pointer)
Output Ports	RGB, DVI-I, S-Video, RCA (Audio & Video)
Input Ports	RGB (2 Ports), Phone Jack (MIC In)
RS-232 Port	Provided
USB 2.0 Port	Provided (USB Camera / Built-in Image Download)
Ethernet Port	Provided
Light Source	Embedded LED Lamp
Light Box	Size: 10" X 8"
Dimensions	Operating: 480mm x 380mm x 505mm Folded: 480mm x 380mm x 150mm
Net Weight	7.4kg (about 16.1lbs)
Power Source	AC/DC 100-240V, 50-60 Hz
Warranty	3 Year Limited Parts and Labor *1
Certifications	FCC, CE

Compatible Operating Systems

Windows®	2000 (SP4), XP (SP2), Vista (32-bit or 64-bit)
Macintosh®	OS 10.3 (Panther), OS 10.4 (Tiger), OS 10.5 (Leopard)

Package Content

AVerVision SPB370	Remote Control with Batteries
Power Adapter & Cord	User Manual
VGA Cable	AVerVision Software CD
S-Video Cable	Warranty Card
USB Cable	Dust Cover
RCA Cable	Anti-Glare Sheet

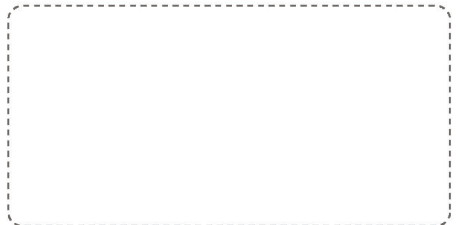


Optional Accessories



Microscopic Adapter

Distributor / Dealer :



*1 Please refer to warranty card

