

NEW
WIDE WD570U
 XD560U
 XD550U

WD570U XD560U/XD550U

Brilliant Color™	Color Enhancer	Wall Screen	10W Speaker	USB/LAN Display	Remote Desktop
Stand-by Audio	Audio Mix	Computer-Free Presentations	Visual PA	Direct Power Off	Long-life Lamp
Low Stand-by Power	Top Loading Lamp	LAN (RJ-45)	HDMI	Closed Caption	Low Fan Noise

Picture Performance Presentation User-friendly

PICTURE BY DLP TEXAS INSTRUMENTS

DLP 3D READY

HDMI HIGH DEFINITION MULTIMEDIA INTERFACE

Input and Output Terminals
 (WD570U/XD560U/XD550U)

- 1 Audio output
- 2 Audio input
- 3 S-Video/Video
- 4 Serial RS-232C
- 5 Monitor output
- 6 PC/Component video input
- 7 HDMI
- 8 USB
- 9 LAN (RJ-45)

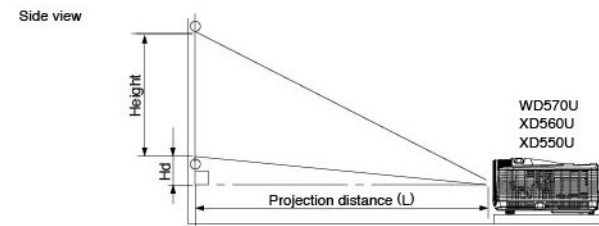
Specifications

Model	WD570U	XD560U	XD550U
Display technology	0.65" 1-Chip DMD	0.55" 1-Chip DMD	0.55" 1-Chip DMD
Resolution	1280 × 800 (Total 1,024,000 pixels)	1024 × 768 (Total 786,432 pixels)	1024 × 768 (Total 786,432 pixels)
Brightness	3500lm	3500lm	3000lm
Contrast ratio	3000 : 1	3000 : 1	3000 : 1
Picture size	40" – 300"	40" – 300"	40" – 300"
Throw ratio	1.5 – 2.3	1.4 – 2.3	1.4 – 2.3
Source lamp	Normal Mode: 230W (Shut Off Time: 3000hrs), Low Mode: 190W (Shut Off Time: 6000hrs)		
PC compatibility	1280 × 800 – 1600 × 1200, 1080p Sync on Green available	1024 × 768 – 1600 × 1200, 1080p Sync on Green available	
Video compatibility	NTSC / NTSC 4.43 / PAL (including PAL-M, N) / SECAM / PAL-60 Component Video; 480i/p (525i/p), 576i/p (625i/p), 720p (750p), 1080i/p (1125i/p 60Hz) 1080i/p (1125i/p 50Hz)		
Input terminals	RGB; mini D-sub 15pin × 2 Audio; Stereo mini jack (φ3.5mm) × 2 (one for PC1, another one for PC2) Video; RCA × 1 + S-VIDEO × 1 Digital; HDMI × 1 Video Audio; RCA jack (L/R) × 1		
Output terminals	RGB; mini D-sub 15pin × 1 Audio; Stereo mini jack (φ3.5mm) × 1		
Communication terminal	SERIAL; mini D-sub 9pin × 1 (RS232C) LAN (RJ-45); × 1 (Projector control, LAN Display) USB type-A; Wireless Display, Computer-free Presentation USB type-B; USB Display		
Audio speaker	10W Mono		
Dimensions (W x H x D)	325 × 113 × 258 mm	325 × 113 × 258 mm	325 × 113 × 258 mm
Weight	3.8 kg (8.38 lbs)	3.5 kg (7.7 lbs)	3.5 kg (7.7 lbs)
Power requirements	AC 100 - 240V, 50/60Hz		
Optional lamp	VLT-XD560LP		

• Compliance with ISO21118-2005

Varies depended on condition:
 • Lamp life specification is an estimate based on verification under proper conditions and is not the duration of the warranty. Lamp will shut-off automatically when usage reaches the specified estimated maximum lamp hours.
 • Service life may vary widely depending on usage and operating environment and conditions, as well as users' adherence to the maintenance and cleaning procedure provided in the user manual.
 • HDMI, the HDMI Logo, and High-Definition Multimedia Interface are trademarks or registered trademarks of HDMI Licensing LLC in the United States and other countries.
 • All brand names and product names are trademarks, registered trademarks or trade names of their respective holders.

Screen Size and Projection Distance



The above numbers are approximate, and may be slightly different from the actual measurements.

Screen size chart (WD570U)

Diagonal size	Screen (16 : 10)		Distance from screen (L)				Height projected image (Hd)	
	Width (W)	Height (H)	Shortest (Wide)		Longest (Tele)		Inch	cm
Inch	Inch	cm	Inch	cm	Inch	m	Inch	cm
40	102	34	86	21	54	49	1.2	7.0
80	152	51	129	32	81	74	1.9	11.4
100	203	68	172	42	108	99	2.5	15.2
120	254	85	215	53	135	124	3.2	19.1
150	315	102	258	64	162	150	3.8	22.9
200	381	127	323	79	202	188	4.8	28.7
250	508	170	431	108	269	251	6.4	38.4
300	635	212	538	132	337	314	8.0	—
300	782	254	648	159	404	377	9.6	—

Screen size chart (XD560U/XD550U)

Diagonal size	Screen (4 : 3)		Distance from screen (L)				Height projected image (Hd)	
	Width (W)	Height (H)	Shortest (Wide)		Longest (Tele)		Inch	cm
Inch	Inch	cm	Inch	cm	Inch	m	Inch	cm
40	102	32	81	24	61	45	1.1	7.3
80	152	48	122	36	91	67	1.7	11.0
100	203	64	163	48	122	90	2.3	14.8
120	254	80	203	60	152	113	2.9	18.5
150	315	96	244	72	183	138	3.4	22.2
200	381	120	305	90	229	170	4.3	27.8
250	508	180	408	120	305	227	5.8	37.1
300	635	240	508	150	381	284	7.2	—
300	782	240	610	180	457	341	8.7	—

eco changes for a greener tomorrow

Eco Changes is the Mitsubishi Electric Group's environmental statement, and expresses the Group's stance on environmental management. Through a wide range of businesses, we are helping contribute to the realization of a sustainable society.

R & B COMPUTER SYSTEMS LTD.
 力衡電腦系統有限公司

☎ **2749 3325** 🌐 www.rnb.com.hk
 📧 rnb@rnb.com.hk

Unit B, 18/F., Billion Plaza 2, 10 Cheung Yue Street, Lai Chi Kok, Kln., H.K.
 九龍荔枝角長裕街 10 號德京廣場 2 期 18 樓 B 室 Fax: 23973768

Specifications are subject to change without notice.



MULTIMEDIA DATA/VIDEO PROJECTORS

Changes for the Better

A Great Companion for Education or Business



NEW
WIDE WD570U
 XD560U
 XD550U



High Resolution, High Contrast & Long-life Lamp Plus a User-friendly Display for Enhanced Convenience

The WD570U, XD560U and XD550U create a new intermediate category in Mitsubishi Electric's line-up of high-performance portable projectors. Placing a focus on greater operation ease, an advanced user-friendly display has been newly added to ensure convenience and simplicity when giving presentations.

Other unique features include USB and Internet ports for trouble-free, direct connection to video sources, making these projectors ideal for use in classrooms and meeting rooms.



NEW WD570U **WIDE WEGA**
XD560U
XD550U

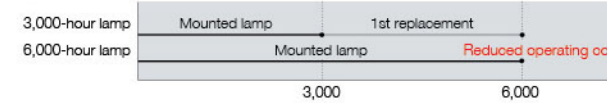


Manufacturing Products that Minimize Environmental Impact

Ecology

6000-hour Long-life Lamp (max. use set to Low mode)

A longer service life for the projection lamp has been achieved by incorporating an optimal design for lamp temperature control. Benefits include substantial reductions in projector operating cost and the labor required for changing the lamp.



*Lamp life specification is an estimate based on verification under proper conditions and is not the duration of the warranty. Lamp will shut-off automatically when usage reaches the specified estimated maximum lamp hours. Service life may vary widely depending on usage and operating environment and conditions, as well as users' adherence to the maintenance and cleaning procedures provided in the user manual.

Auto Power Off

If no image signal is output for a predetermined period of time*, power is automatically turned off, realizing energy savings by reducing needless power consumption.

*Time preset by user

Stand-by Wattage under 0.5W*

Stand-by (low) mode power consumption is less than 0.5W, offering increased energy savings and further contributing to environmental preservation.

*When in stand-by (low) mode. At this time, use of the LAN function, RS-232C output is not possible.

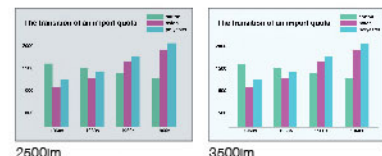


Presentation

3500lm High Luminance (WD570U/XD560U)

*XD550U: 3000lm

The high 3500lm luminance (3000lm for XD550U) helps to ensure presentation images are clearly seen without lowering the light in the room.



*Image brightness comparison

3000:1 High Contrast

Dark chip3™ is newly introduced to the DLP™ chip line-up. Stray-light processing has been optimized for the optical system, achieving a high contrast of 3000:1. This makes it possible to reproduce sharp, vivid images in which sentences and other characters can be easily read.

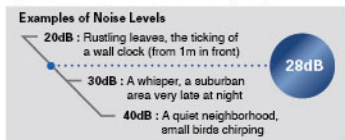
3D READY – Enjoy the future today



User Friendly

Ultra Quiet 28dB Operation

Fan noise during projector operation can be distracting during a presentation or videoconference. The WD570U, XD560U and XD550U projectors operate at a significantly low noise level of only 28dB (i.e., in "low lamp" mode). As a result, presentations and conferences can be held without distracting projector noise in the background.



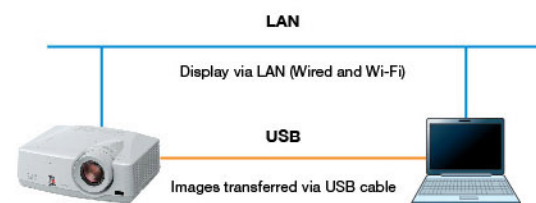
Top-loading lamp for easier maintenance



Network

USB Display/LAN Display

To use the projector to reproduce images from a computer, a VGA cable, USB cable, LAN cable or commercially available wireless dongle can be used. For displaying images via a LAN, up to four computers can be connected to one projector. The projection screen can be divided into quarters, reproducing all computer screens simultaneously.

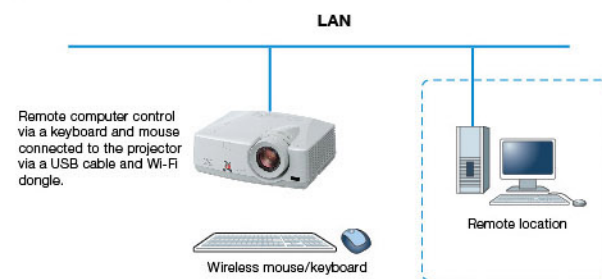


Notes:

- 1) Only one optional USB Type-A port from a computer can be directly connected to a projector. Multiple connections using a USB hub is not possible.
- 2) For displaying images via a LAN, network settings are required.
- 3) Not all USB dongles are compatible.

Remote Desktop

When using the LAN Display function, a USB mouse or USB keyboard can be connected to the projector enabling direct access to a computer utilizing the Internet or other application.

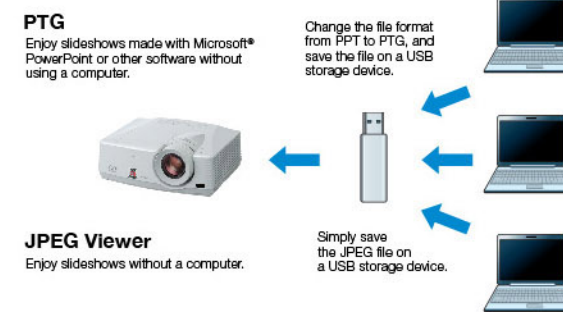


Computer-free Presentations (PTG file/JPEG Viewer)

Using "PTG Converter", PowerPoint files can be converted into a special format and saved on a USB storage device. When the USB device is connected to the projector, users can replay slideshows or animation effects using only the projector.

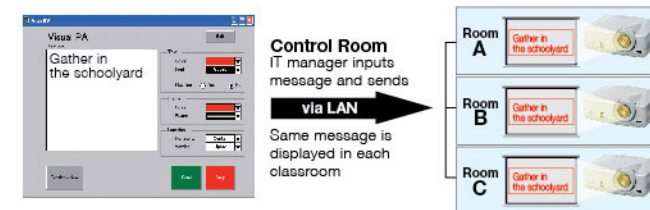
Note: The types of slideshows and animation effects that can be replayed are limited.

JPEG files saved on a USB storage device can be projected in slideshow style. Note: Only compatible with JPEG files.



Simultaneous Message Display (Visual PA)

Using a control room computer equipped with projector-control software, administrators can simultaneously send messages (up to 390 characters long) in real-time to projectors connected to the LAN. Ideal for broadcasting important information to multiple rooms in the school or building.



Network Connectivity

Projectors are equipped with a RJ-45 LAN terminal for remote operation. Additionally, when used with Crestron® Room View®, integrated control of up to 250 projectors including power on/off control, message display and confirmation of lamp service hours is possible using RoomView™/e-Control™. Both projectors are equipped with AMX Device Discovery for simplified device management and compatible with PJLink™.

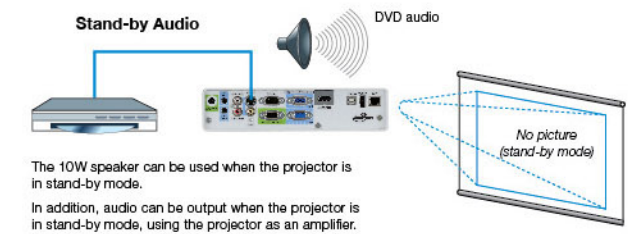
PJ Link is a registered trademark or trademark registration has been submitted in Japan, the United States and other countries/regions.



Audio

Stand-by Audio/Audio Pass-through

When the projector is in stand-by mode, its 10W speaker can still be used. Additionally, while in stand-by mode, an external speaker can be used by connecting it via the Audio Out terminal.



The 10W speaker can be used when the projector is in stand-by mode. In addition, audio can be output when the projector is in stand-by mode, using the projector as an amplifier.

Excellent Sound Projection (10W Speaker+Audio Mix)

A high-volume, 10W speaker is built-in, eliminating the need for an external speaker. Using the "Audio Mix" feature and wireless microphone sold separately, the presenter's voice is reproduced loud and clear in real time.

*Only compatible with stereo mini-jack. Not compatible with RCA jack (L/R) or HDMI. *10W speaker and external speaker cannot be used at the same time.

