

**Multimedia Projector**  
**EB-G5600 / G5650W / G5750WU / G5900 / G5950**



SPECIFICATIONS		EB-G5600	EB-G5650W	EB-G5750WU	EB-G5900	EB-G5950
Projection System						
RGB Liquid-Crystal Shutter Projection System						
Specification of Main Parts	LCD	Size	0.8 inch with MLA (D7)	0.74 inch with MLA (D7)	0.76 inch with MLA (D9)	0.8 inch with MLA (D7)
Driving Method	Polysilicon TFT Active Matrix	Pixel Number	786,432 dots (1,024 x 768) x 3	1,024,000 dots (1,280 x 800) x 3	2,304,000 dots (1,920 x 1,200) x 3	786,432 dots (1,024 x 768) x 3
		Native Resolution	XGA	WXGA	WUXGA	XGA
		Projection Lens	Manual Focus & 1.8x Manual Zoom	F=1.64 - 2.50 / f=21.27 - 37.93 mm		
Lamp	Type	275W UHE	330W UHE			
Life		2000 hours (High Brightness mode) / 3000 hours (ECO mode)				
Screen Size (Projected Distance)						
Offset		10.0 / 0:10	10:-1 / -1:10			
Light Output (Brightness*)	Normal / ECO Mode	4500 lm / 3600 lm			5200 lm / 4160 lm	
Color Light Output		4500 lm			5200 lm	
Contrast Ratio		1000:1	2000:1	1500:1	1000:1	2000:1
Color Reproduction						
Color Mode	PC	Photo, Presentation, Theatre, Dynamic, sRGB, DICOM SIM, Customized				
Video		Sports, Presentation, Theatre, Dynamic, sRGB, Customized				
Sound Output						
Lens Shift	Vertical (Upward / Downward)	±50% from lens center <Manual>	±60% from lens center	±58% from lens center	±50% from lens center	
Horizontal (Left side / Right side)		±10% from lens center <Manual>		±9% from lens center <Manual>	±10% from lens center <Manual>	
Effective Scanning						
Frequency Range (Analog)	Panel Clock	13.5 MHz to 162 MHz up to UXGA 60Hz				
Horizontal		15 kHz to 92 kHz				
Vertical		50 Hz to 85 Hz				
Keystone Correction (with standard lens)						
Vertical		-40 to +40 degrees (Zoom: Tele)		-30 to +30 degrees (Zoom: Tele)		-40 to +40 degrees (Zoom: Tele)
Horizontal		-20 to +20 degrees (Zoom: Tele)				
Analog RGB I/O						
Display Performance	Native	1,024 x 768 dots	1,280 x 800 dots	1,920 x 1,200 dots	1,024 x 768 dots	
Input Terminal	Resize	Video Standards up to 1080p, PC standards up to UXGA-60, Wide PC Standards up to WUXGA-60. Refer to Compatible mode (WUXGA)	Video Standards up to 1080p, PC standards up to UXGA-60, Wide PC Standards up to WUXGA-60 RB. Refer to Compatible mode (WUXGA)	Video Standards up to 1080p, PC standards up to UXGA-60, Wide PC Standards up to WUXGA-60 RB. Refer to Compatible mode (WUXGA)	Video Standards up to 1080p, PC standards up to UXGA-60, Wide PC Standards up to WUXGA-60 RB. Refer to Compatible mode (WUXGA)	
Video		D-sub 15-pin x 2, 5-BNC x 1	D-sub 15-pin x 1, 5-BNC x 1	D-sub 15-pin x 1, 5-BNC x 1	D-sub 15-pin x 2, 5-BNC x 1	
Audio		Stereo mini-jack x 3	Stereo mini-jack x 1	Stereo mini-jack x 1	Stereo mini-jack x 3	
Output Terminal	Video	D-sub 15-pin x 1				
Audio		Stereo mini-jack x 1				
Video I/O						
Input Signal	Video Standard	NTSC / NTSC4.43 / PAL / M-PAL / N-PAL / PAL60 / SECAM				
Input Terminal	Video	Composite Video: RCA (Yellow) x 1, 1-BNC x 1 S-Video: Mini DIN x 1 Component Video: D-sub 15-pin x 2 RGB-Video: 5-BNC x 1, D-sub 15-pin x 2				
Video		D-sub 15-pin x 2	D-sub 15-pin x 1	D-sub 15-pin x 1	D-sub 15-pin x 2	
Audio		RCA (White / Red) x 1 pair				
HDMI						
Input Signal	Video Standard	480i / 576i / 480p / 576p / 720p / 1080i / 1080p				
Video Signal		TMDS (TMDS is signal for HDMI)				
Audio Signal		Linear PCM				
Input Terminal	Video & Audio	HDMI x 1				
DVI-D						
Display Performance	Native	N/A	1920 x 1200 dots (WUXGA)	N/A	N/A	
Input Signal	Resize	N/A	Video Standards up to 1080p, PC standards up to UXGA-60, Wide PC Standards up to WUXGA-60 RB. Refer to Compatible mode (WUXGA)	N/A	N/A	
Video Standard	N/A	N/A	480i / 576i / 480p / 576p / 720p / 1080i / 1080p	N/A	N/A	
Video Signal	N/A	N/A	500 mVrms / 47 k-ohm	N/A	N/A	
Input Terminal	Video	N/A	DVI Type D x 1	N/A	N/A	
Audio		N/A	Stereo mini-jack x 1	N/A	N/A	
HDCP		N/A	Yes	N/A	N/A	
Control I/O						
USB I/O		Type A x 1			Type A x 1	
Serial I/O		RS-232C (D-sub 9-pin x 1)				
Remote Control		Stereo mini-jack x 1				
Network I/O						
Wired LAN		RJ45 x 1 100Mbps	Type A x 1 (for Wireless LAN unit)	N/A	RJ45 x 1 100Mbps	
Wireless	I/O Terminal	N/A	Optional Accessory only	N/A	Type A x 1 (for Wireless LAN unit)	
Wireless LAN unit		N/A	Optional Accessory only	N/A	Optional Accessory only	
Operating Temperature						
0°C to 40°C <-32°F to 104°F> (20%-80% humidity, unfrozen)						
Operating Altitude						
0 m to 3000 m <0 ft to 9843 ft> (over 1,500m / 4,921 ft: with High altitude mode)						
Direct Power On / Off						
Yes						
Power Supply Voltage						
100 - 240 VAC ±10%, 50 / 60 Hz						
Power Consumption						
Lamp On / Standby	100 - 120V	464W / 0.38W	390W / 0.38W	477W / 0.38W	464W / 0.38W	
	220 - 240V	373W / 0.47W	442W / 0.47W	451W / 0.47W	442W / 0.47W	
Dimensions (D x W x H)						
311.5 x 470 x 135 mm (Not including foot and projection lens)						
Weight						
Approx. 6.7 kg						
Fan Noise						
Normal / ECO Mode						
		33 dB / 28dB	38 dB / 32dB	39 dB / 33dB	38 dB / 32dB	

SUPPLIED ACCESSORIES

Power Cable	(3.0 m)
Computer Cable	(1.8 m)
Remote Control With Alkaline	AA type x 2
Password Protect Sticker	
Cable cover	
Lens release button lock screw	
EPSON Projector Software	

OPTIONAL ACCESSORIES

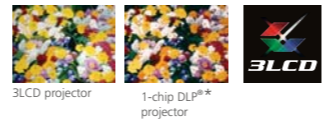
ELPLP62	Spare Lamp (275W)
ELPLP63	Spare Lamp (330W)
ELPAF17	Air Filter
ELPLR03	Rear Projection Lens
ELPLS03	Standard Zoom Lens
ELPLM04	Middle Throw Zoom Lens
ELPLM05	Middle Throw Zoom Lens
ELPLL06	Long Throw Zoom Lens
ELPAP03	Wireless LAN adapter
ELPAP08	Quick Wireless Connection USB Key
ELPST16	Wireless Mouse Receiver
ELPKC28	Wired Remote Cable

WARRANTY SERVICE  
 3 Years Onsite Warranty  
 Service to be provided for local purchase only.

**EPSON COVERPLUS**  
 Extended Warranty

# The warranty service can be extended by purchasing Epson Coverplus Extended Warranty. For more information, please contact Epson customer support.

**Bold, Bright, Beautiful...3LCD Technology**  
 3LCD technology achieves brighter, more natural images and smoother, sharper video playback. No color break-up makes images gentler on the eyes.



\*DLP® is a registered trademark or a trademark of Texas Instruments in the U.S. and / or other countries.



PROJECTION DISTANCE OF STANDARD LENS (XGA MODEL)    PROJECTION DISTANCE OF STANDARD LENS (WXGA MODEL)    PROJECTION DISTANCE OF STANDARD LENS (WUXGA MODEL)

X (screen size / dimension)	Shortest (Wide)		Longest (Tele)		Vertical distance from center of lens to bottom edge of screen
	Y (cm / inch)	Y (cm / inch)	Y (cm / inch)	Y (cm / inch)	
30" / 61 cm x 46 cm / 24.0" x 18.1"	77 / 30	142 / 56	0-46 / 0.0-18.0		
40" / 81 cm x 61 cm / 31.9" x 24.0"	104 / 41	190 / 75	0-61 / 0.0-24.0		
60" / 120 cm x 90 cm / 47.2" x 35.4"	158 / 62	287 / 113	0-91 / 0.0-36.0		
80" / 160 cm x 120 cm / 63.0" x 47.2"	213 / 84	385 / 151	0-122 / 0.0-48.0		
100" / 200 cm x 150 cm / 78.7" x 59.1"	267 / 105	482 / 190	0-152 / 0.0-60.0		
200" / 410 cm x 300 cm / 161.4" x 118.1"	539 / 212	968 / 381	0-305 / 0.0-120.0		
300" / 610 cm x 460 cm / 240.2" x 181.1"	811 / 319	1457 / 573	0-457 / 0.0-180.0		

PROJECTION DISTANCE OF OPTION LENS

4:3 Screen size	ELPLR03		ELPLM04		ELPLM05		ELPLL06	
	Shortest (Wide)	Longest (Tele)	Shortest (Wide)	Longest (Tele)	Shortest (Wide)	Longest (Tele)	Shortest (Wide)	Longest (Tele)
30" / 61 cm x 46 cm / 24.0" x 18.1"	45 / 18							
40" / 81 cm x 61 cm / 31.9" x 24.0"			185 / 73	285 / 112	276 / 109	427 / 168	420 / 165	572 / 225
60" / 120 cm x 90 cm / 47.2" x 35.4"			283 / 111	433 / 170	423 / 166	649 / 256	639 / 251	867 / 341
80" / 160 cm x 120 cm / 63.0" x 47.2"			380 / 150	581 / 229	569 / 224	871 / 343	857 / 338	1162 / 457
100" / 200 cm x 150 cm / 78.7" x 59.1"			478 / 188	728 / 287	716 / 282	1093 / 430	1076 / 424	1457 / 574
200" / 410 cm x 300 cm / 161.4" x 118.1"			966 / 380	1466 / 577	1448 / 570	2202 / 867	2170 / 854	2932 / 1154
300" / 610 cm x 460 cm / 240.2" x 181.1"			1454 / 572	2204 / 868	2180 / 858	3311 / 1304	3264 / 1285	4407 / 1735



Bright and Beautiful

**R & B COMPUTER SYSTEMS LTD.**  
 力衡電腦系統有限公司

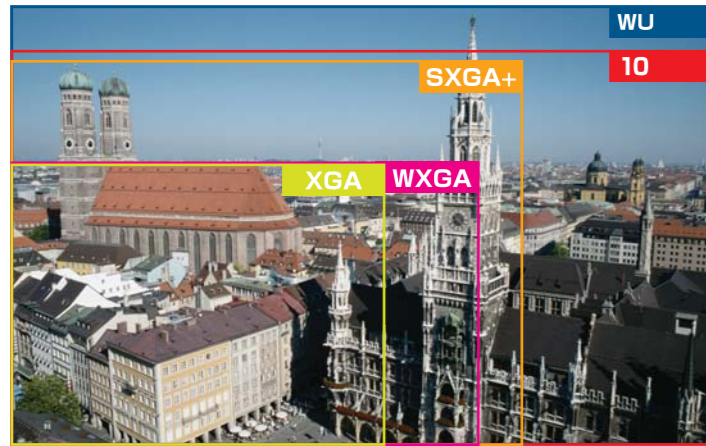
☎ 2749 3325    🌐 www.rnb.com.hk  
 📧 rnb@rnb.com.hk

Unit 1009, Global Gateway Tower, 63 Wing Hong Street, Cheung Sha Wan, Kln., HK  
 香港九龍長沙灣永康街 63 號 Global Gateway Tower 1009 室

Multimedia Projector  
**EB-G5600 EB-G5650W EB-G5750WU EB-G5900 EB-G5950**

## Superb Projection Quality

### 1. WUXGA Resolution (Only WUXGA Model)

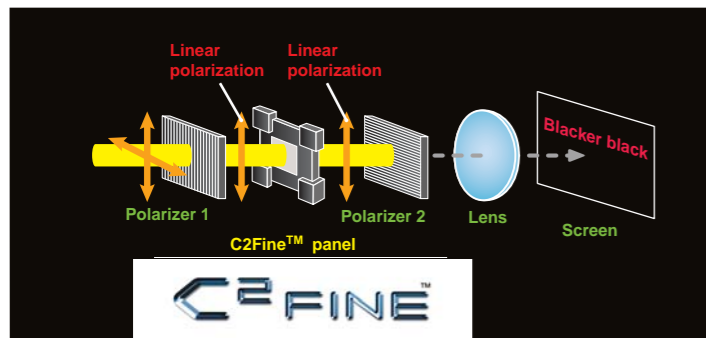


Epson's new product offers WUXGA (1920x1200 pixels) resolution for a high-resolution image display up to full HD video (1920x1080 pixels). Even on large screens, images maintain sharp, vivid detail, for a dynamic viewing experience.

### 2. High Contrast With Unbeatable Color Quality

#### C<sup>2</sup>Fine™

High contrast and flawless picture quality, thanks to Epson's proprietary C<sup>2</sup>Fine™ (Crystal Clear Fine) technology and inorganic LCD panels with Vertical Alignment (VA) technology. This technology is same as our home cinema projectors, with optical phase control technology to minimize polarized light leakage and increase contrast ratio.



#### Low Contrast Image



#### High Contrast Image



\*EB-G5650W / G5950: 2000:1  
\*EB-G5750WU: 1500:1  
\*EB-G5600 / G5900: 1000:1

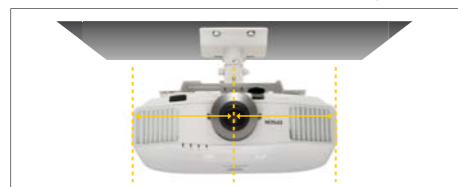
## Stylish Design

### Stylish And Compact Design

#### Centered Lens

The centered lens makes installation simple.

- Simply align the ceiling mount post, the center of the projector, and the center of the screen.
- There's no need to consider the lens offset from the projector center.



#### Pleasing, Professional Design

The slim white case looks perfectly at home in any meeting room or classroom.



#### Neat Cable Storage

Cables can be neatly tucked out of sight behind a rear terminal input cover that matches the case design.



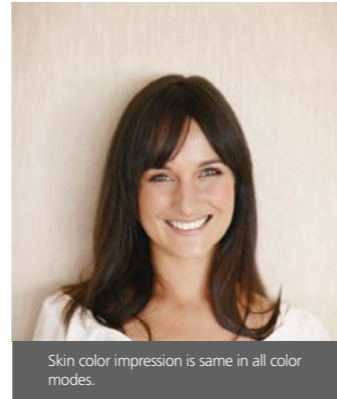
### 3. Excellent Color Management

#### Epson Color Management System

The Epson color management system achieves perfect balance between brightness and color quality. Colors remain superb in all color modes, creating the same impression in the brightest mode as in all other modes. Natural colors (skin, vegetation) do not vary significantly between different color modes, as Epson engineers took great care to maintain the look of skin color across all modes. Reds and yellows are particularly vivid.



It does not happen the yellowish image when the color mode is change.

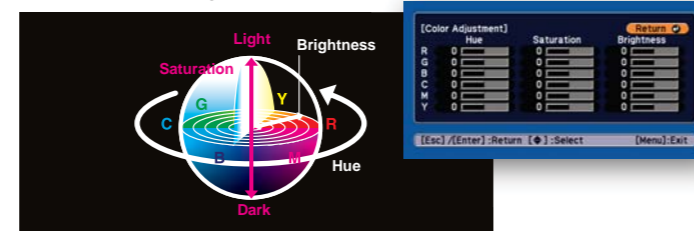


Skin color impression is same in all color modes.

\*simulated Image

### 4. Image Customization Features

#### Six Axis Color Adjustment



Users can adjust the hue, saturation, and brightness for the exact color balance they prefer.

\*Only available in "Customized" color mode.

#### 3-2/2-2 Pull Down Selection (Only WUXGA Model)

1080p/24fps signals can be processed using 3-2 or 2-2 pull down, depending on taste.

3-2 pull down: Smoother image

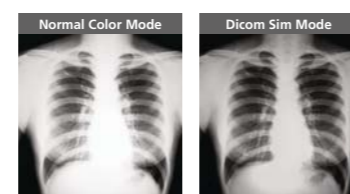
2-2 pull down: Ideal for movies, with the same frame length as film.

\*From 24 frames, 3-2 pull down creates 60 fps and 2-2 pull down creates 48 fps.

#### Advanced Sharpness

Users can adjust sharpness as precisely as they like. Formerly only a feature of high-end home cinema projectors, and available now for the first time in Epson business projectors.

#### DICOM SIM Mode



\*simulated Image

This color mode produces images with clear shadows, ideal for projecting X-rays and other medical images.

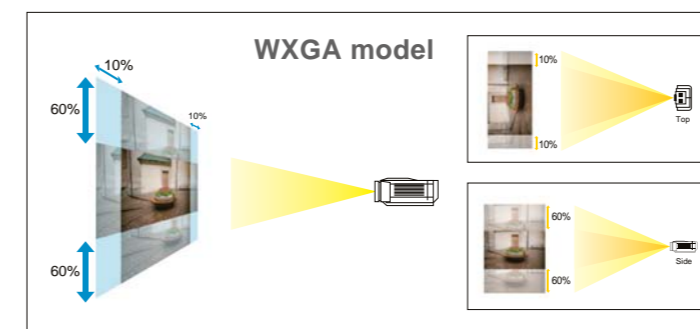
If a brochure mentions DICOM mode, be sure to stress the following note.

\*This projector is not a medical device and can not be used for actual medical diagnosis.

## Superior Usability

### 1. Easy Installation

#### Horizontal / Vertical Lens Shift



Projection can easily be adjusted with both vertical and horizontal lens shift, giving users more flexibility in projector and screen placement.

\*When maximum horizontal lens shift is used, available vertical lens shift is reduced.  
\*When maximum vertical lens shift is used, available horizontal lens shift is reduced.

#### 5 Lens Options



(Projection range: with 100 inch/16:10 screen)

XGA model: 1.58-14.57m

WXGA model: 1.66-15.33m

WUXGA model: 1.63-15.03m

The 1.8x zoom of the standard lens allows a broad projection range, and there are optional lenses if a greater range is needed.

### 2. Easy Maintenance

#### Easy Accessories Replacement

##### Easy Lens Replacement



Bayonet mounts make lens replacement a cinch. An anti-theft locking mechanism is included.

##### Easy-to-replace Lamps



Lamps can be replaced quickly without tools and without having to uninstall the projector from the ceiling.

##### Easy-to-replace Filter



When the time comes to change the filter, it's as simple as pulling the filter out.

#### Advanced Monitoring & Control Function

##### - Easy MP monitor

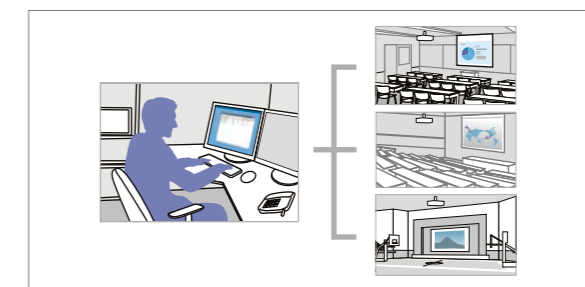
##### - Message Broadcasting

(Only EB-G5750WU / EB-G5650W / EB-G5950)

##### - RoomView® compatibility

(Only EB-G5750WU / EB-G5650W / EB-G5950)

##### - PLink™ compatibility



## Convenient functions

### For More Effective Meetings

#### Split Screen



Split Screen allows inputs from two separate sources to be displayed side by side on the same screen. In a video conference, for example, images of presentation materials and remote participants can be shown simultaneously.

### Multi PC Projection (Only EB-G5750WU / EB-G5650W / EB-G5950)

With Epson "EasyMP Multi PC Projection" freeware, the projectors can be used for interactive meetings. Up to 16 computers can connect to one projector on a network, with screens from any four computers being projected at a time.



#### <Compare Data On Up To Four Screens>

Compare and analyze data on simultaneously projected screens from multiple computers connected to the network.

#### <Drag And Drop To Change Presenters>

Adding or removing presenters' screens is done by simply dragging and dropping user icons. This allows meeting participants to share their opinions more quickly and effectively.